



Established 1972

By and For the People of Love County

Richard Barker,
Administrator

Ambulance Emergency

911

Clinic Appointments

276-2400

Hospital Information

276-3347

Adult Day Center

276-1542

Community Resources

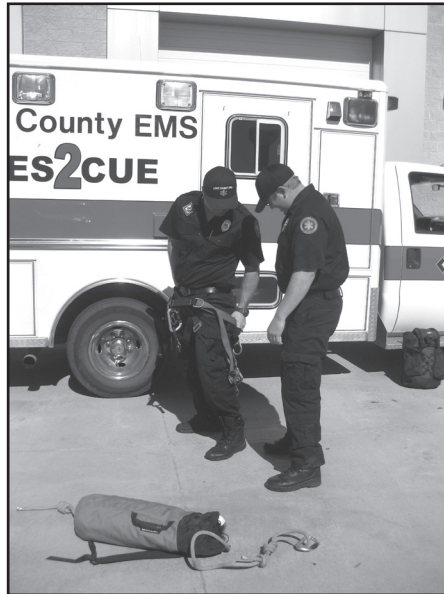
211

Domestic Violence Help

276-2042

Hotline - 226-6424

EMS ROPE DEPLOYED TO RESCUE PATIENTS



Love County EMS-Fire Brigade Firefighter/ Paramedic R.J. Morgan puts on a body harness. Firefighter/Paramedic Cody Hendricks attaches a rope bag to the harness.

What Is It?

CMC Rope Rescue Gear

Purpose:

Rope lines are used to lower firefighters off the side of a hill/ ravine or building to reach patients below.

The firefighter clips the rope bag to his body harness. Rope feeds out through top or bottom ports. One end of the rope will be anchored to a tree or other solid object and attached to a pulley system to help lower or raise the firefighter.

Love County EMS-Fire Brigade is based at Station 2, WinStar Casino.

We're YOUR Hospital, Clinic and EMS

Mercy Health/Love County

300 Wanda - Marietta, OK 73448

www.mercyhealthlovecounty.com

*The Small-Town Hospital
with the Big Heart*

